

CRUMBLING FORESTS

The Erosion In Serra de Arga

Serra D'Arga is a granite mountain with a maximum height of 825 m (Alto do Espinheiro, Montaria), in the north of Portugal.

The Real Deal!

In 2000:

- 30% of the soil of Serra d' Arga was degraded forest;
- 6% was naked rock

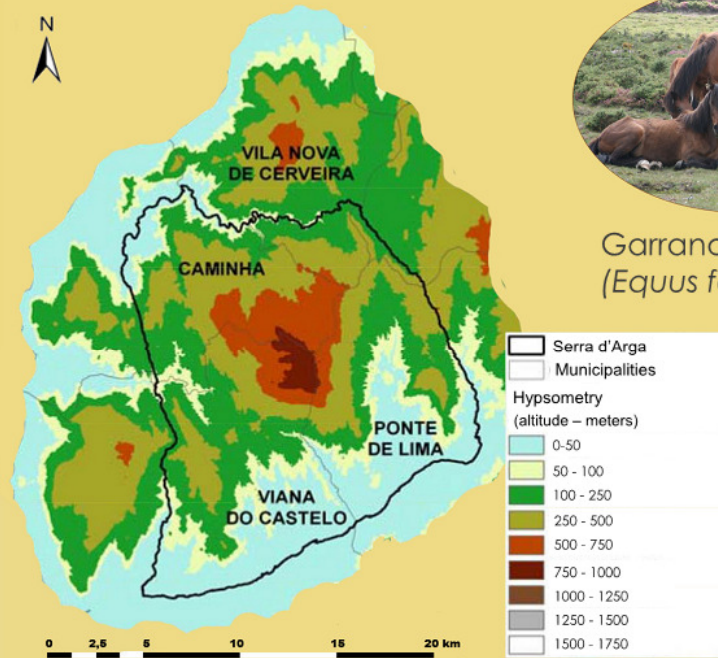


Fig.1- Map of Viana do Castelo's relief.



Garrano wild horse
(*Equus ferus caballus*)



Iberian wolf
(*Canis lupus signatus*)



Pyrenean desman
(*Galemys pyrenaicus*)

Protect the local species!

Prevention measures:

Erosion Factors:

1. Forest fires;
2. Rough relief;
3. Poor territorial planning.

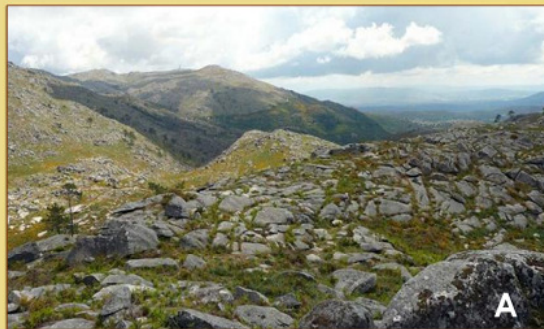


Fig. 2 - Panoramic views of Serra d'Arga - Natura 2000 Site:

A – Chaos of blocks; B - Riparian vegetation

<http://www.descubraminho.pt/en/northern-portugal/serra-de-arga>

http://sper.pt/oldsite/actas7cier/PFD/Tema%20II/2_3.pdf

<https://pt.wikiloc.com/wikiloc/imgServer.do?id=1321356>

<http://www.icnf.pt/porta/naturaclas/m2000>

<http://forestis.pt/>

1. Florestation with native species;
2. Protect the surrounding area of the hydrographic network;
3. Implant long term territorial planning measures.